

Rochester Schools Joint Building Committee

October 10, 2023 – 6 pm



Architectural Plan- 1st Floor



1 FIRST FLOOR - 49,493 SF
Scale: 1" = 20' 0"

Rochester Elementary School

Salmon Falls Road, Rochester, NH

FIRST FLOOR: 49,493 SF
SECOND FLOOR: 19,918 SF
TOTAL: 69,411 SF

OCTOBER 11, 2023



Architectural Plan- 2nd Floor



1 FIRST FLOOR - 49,493 SF
Scale: 1" = 20' 0"

Rochester Elementary School
Salmon Falls Road, Rochester, NH

FIRST FLOOR: 49,493 SF
SECOND FLOOR: 19,918 SF
TOTAL: 69,411 SF

OCTOBER 11, 2023



Building Design Options



Option A



Option B



Option C



Building Design Option A



Building Design Option A



Building Design Option B



Building Design Option B



Building Design Option C



Building Design Option C



Aspirational Classroom Design

1 BIOPHILIC DESIGN

Enhance the user experience by increasing access to the outside world and utilizing materials that are natural or mimic organic materials.

- 1-A - ACCESS TO NATURAL LIGHT AND VIEWS OF NATURAL SURROUNDINGS
- 1-B - USE OF NATURAL MATERIALS SUCH AS WOOD AND LINOLEUM
- 1-C - USE OF FINISHES THAT EMULATE NATURAL TEXTURE AND NON-REPEATING PATTERNS

2 TECHNOLOGY EVERYWHERE

Utilize technology to connect between teacher and students and access resources of the world community as a primary source of content delivery.

- 2-A - WIRELESS ACCESS POINTS
- 2-B - SURROUND SOUND SYSTEM
- 2-C - TEACHER BROADCAST + RECORDING STATION
- 2-D - CHARGING ACCESS POINTS THROUGHOUT
- 2-E - SMART SCREENS - FIXED, MOBILE, AND DESK MOUNTED

3 FLEXIBLE LEARNING ENVIRONMENTS

Create environments for multiple learning styles. Every space is a learning space.

- 3-A - SMALL GROUP AND INDIVIDUAL INSTRUCTION CONFIGURATION OPTIONS
- 3-B - MOVEABLE TEACHING STATION WITH ONBOARD STORAGE
- 3-C - ALTERNATIVE LEARNING AREAS - SOFT SEATING, FIDGET STOOLS
- 3-D - MULTIPLE CLASSROOM "FRONTS"
- 3-E - CHILL-OUT SPACES
- 3-F - MOBILE STORAGE CONTAINERS

4 HEALTHY LEARNING ENVIRONMENTS

Create healthy spaces for learning with enhanced air filtration and the ability to introduce outside air.

- 4-A - INCREASED AIRFLOW RATE
- 4-B - UPGRADE TO MERV 13 FILTRATION
- 4-C - ACCESS TO OUTSIDE AIR
- 4-D - DOORS TO DIRECTLY ACCESS OUTSIDE SPACES
- 4-E - ACCESS TO HAND-WASH SINKS IN CLASSROOMS

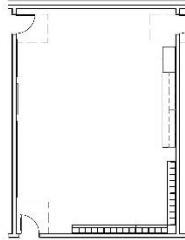
5 ENVIRONMENTAL CONTROLS

Classrooms with controlled light, sound and temperature.

- 5-A - ACOUSTIC TREATMENTS TO WALLS AND CEILINGS AND GOOD INSULATION BETWEEN CLASSROOMS
- 5-B - SUN SHADES AND LIGHT SHELVES ADDED TO WINDOWS
- 5-C - LED LIGHTS: DIMABLE WITH LIGHT TEMPERATURE CONTROL
- 5-D - AUTOMATIC LIGHTING CONTROLS
- 5-E ZONED LIGHTING CONTROLS FOR CUSTOMIZABLE LEARNING ENVIRONMENTS.
- 5-F WELL INSULATED EXTERIOR ENVELOPE FOR THERMAL COMFORT AND PROMOTING CONCENTRATION



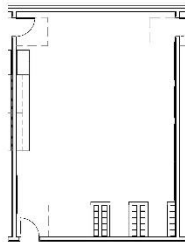
Classroom Layout Options



1 CLASSROOM LAYOUT OPTION 1
Scale: 1/8" = 1'-0"



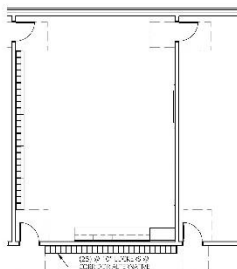
4 CLASSROOM LAYOUT OPTION 1
Scale:



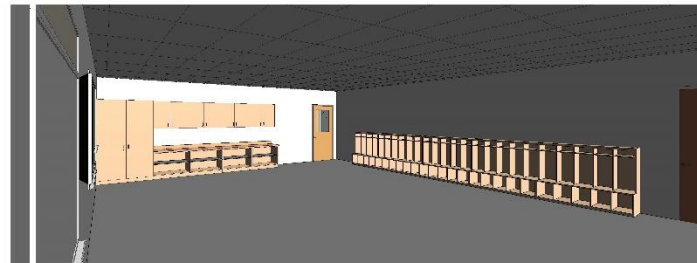
2 CLASSROOM LAYOUT OPTION 2
Scale: 1/8" = 1'-0"



5 CLASSROOM LAYOUT OPTION 2
Scale:



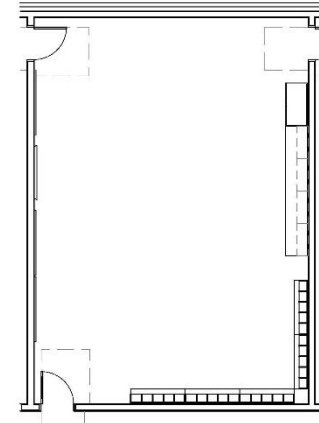
3 CLASSROOM LAYOUT OPTION 3
Scale: 1/8" = 1'-0"



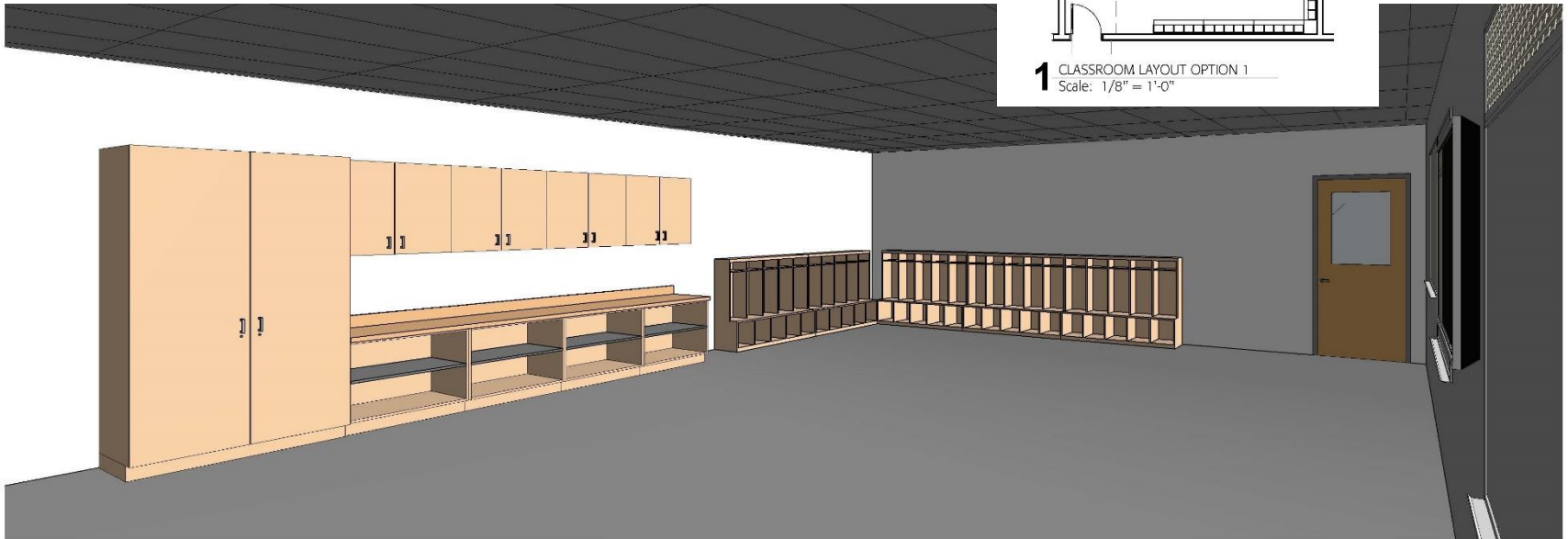
6 CLASSROOM LAYOUT OPTION 3
Scale:



Classroom Layout Options



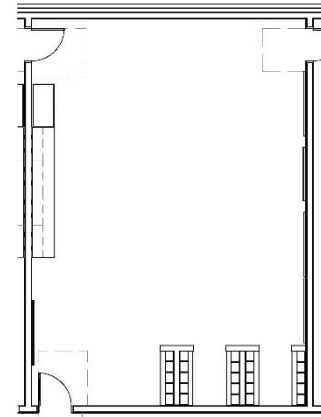
1 CLASSROOM LAYOUT OPTION 1
Scale: 1/8" = 1'-0"



4 CLASSROOM LAYOUT OPTION 1
Scale:



Classroom Layout Options



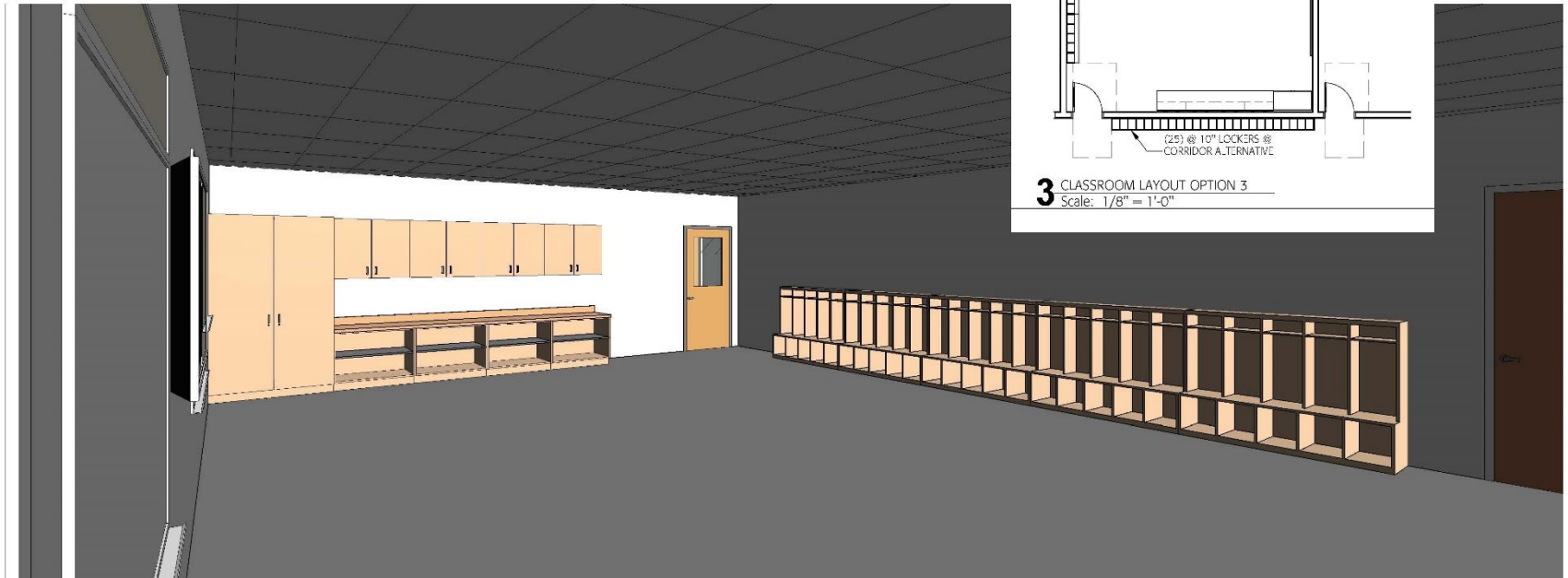
2 CLASSROOM LAYOUT OPTION 2
Scale: 1/8" = 1'-0"



5 CLASSROOM LAYOUT OPTION 2
Scale:



Classroom Layout Options



6 CLASSROOM LAYOUT OPTION 3
Scale:

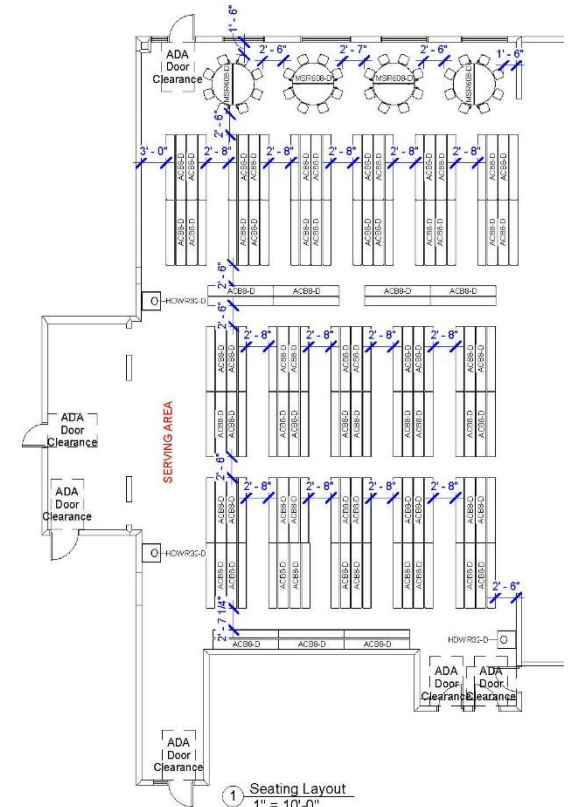


Cafeteria Layouts

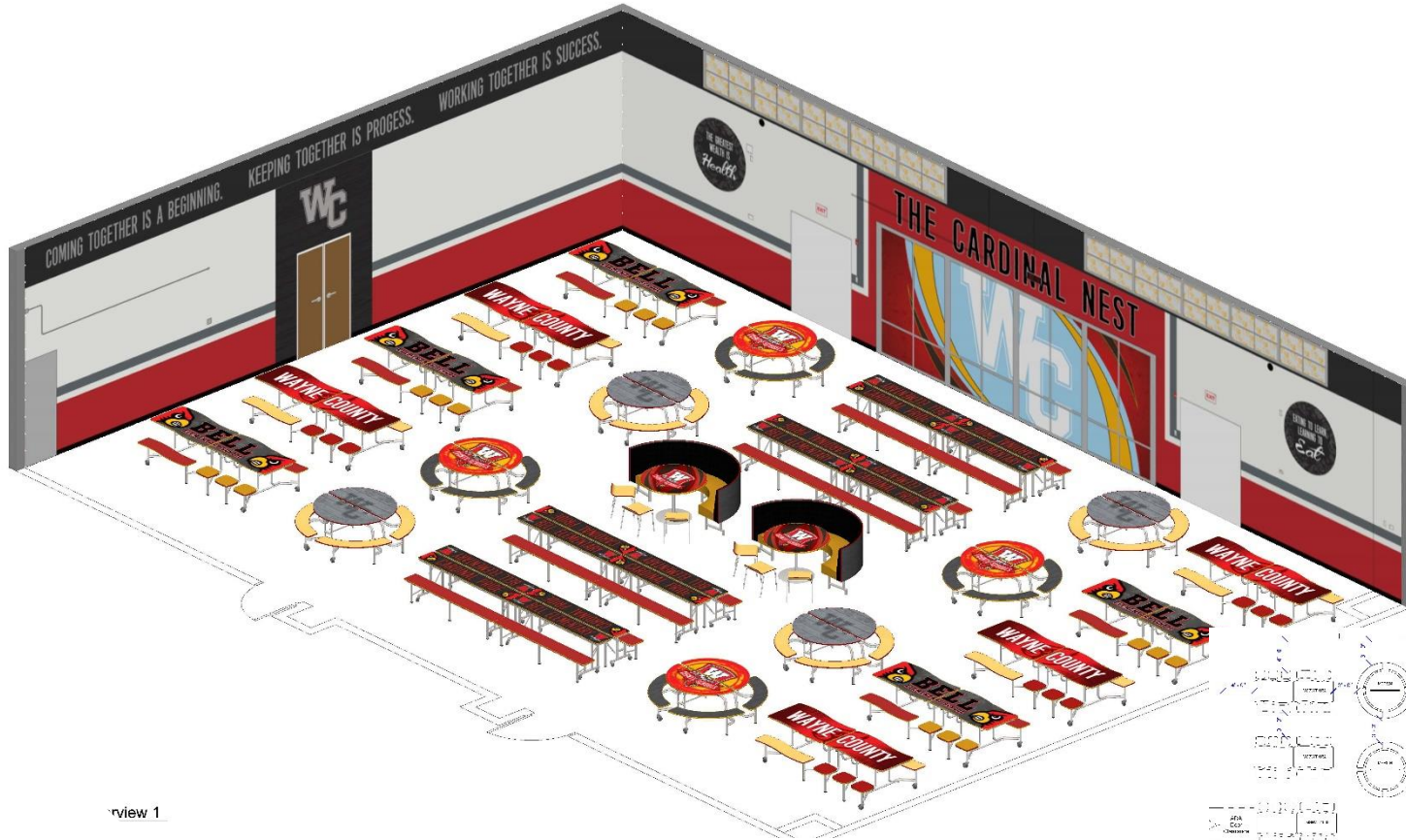


1 3D Overview 2

- Maximizing Capacity
- Single Sided Counter Seating
- Small Round Table Seating Side Area

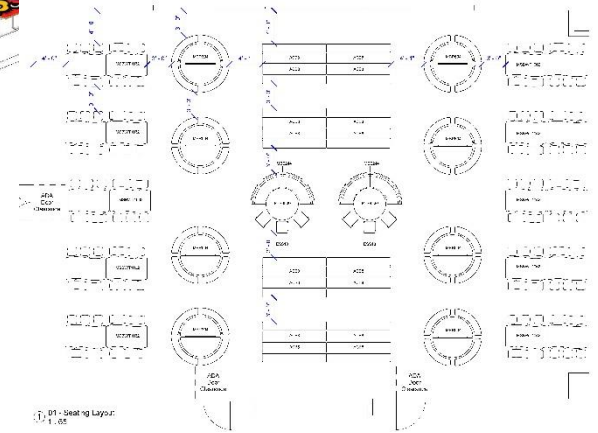


Cafeteria Layouts



view 1

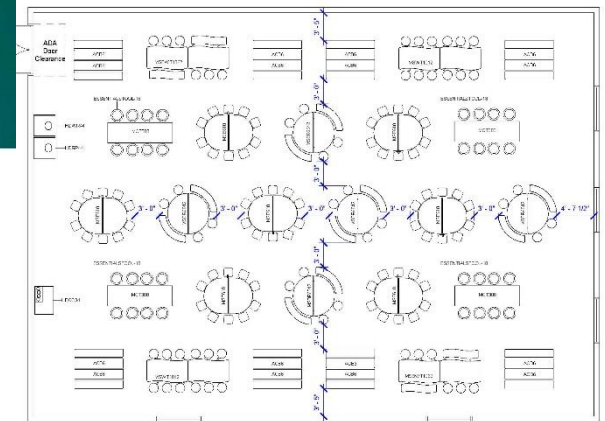
- Medium Density/ Capacity
- Diverse Seating (long, round and booths)
- No Side Group (Lunch Bunch) Seating Area



Cafeteria Layouts



- Mixed Seating/ Group arrangements
- No Side Group (Lunch Bunch) Seating Area



Next Steps – Building Design

- Refine the building appearance
- Mechanical, Electrical, Plumbing Systems and Sustainability Review and Design
- Mechanical, Electrical, Plumbing Fire Protection (MEP/ FP)coordination meetings
- Structural review of building and Geotech for foundation design
- Continue to develop architectural design development documents
- Start outline specs for materials



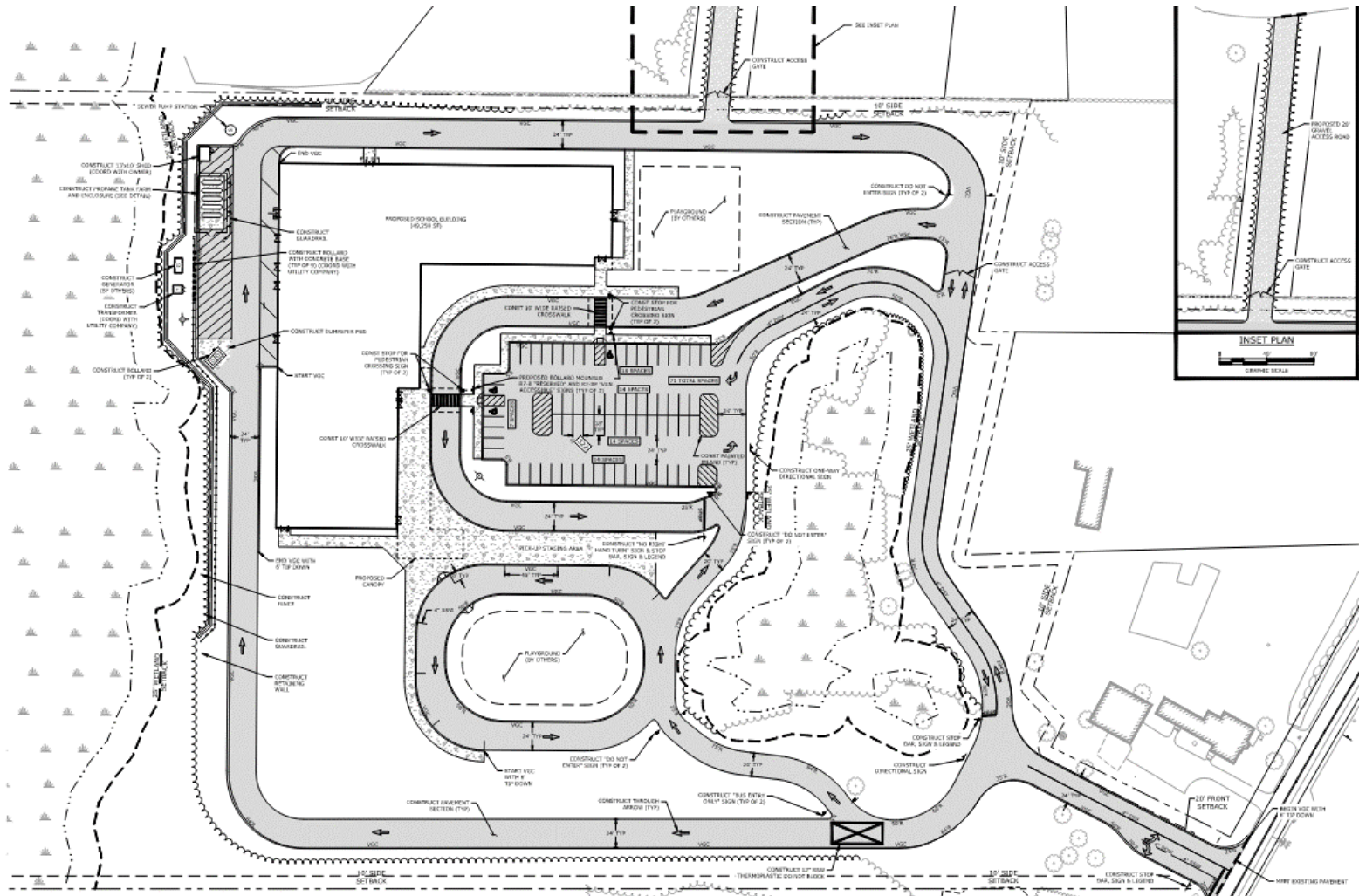
Civil Update

Tighe & Bond

Brad L. Mezquita, PE, LEED AP
Alexander Sellar, PE

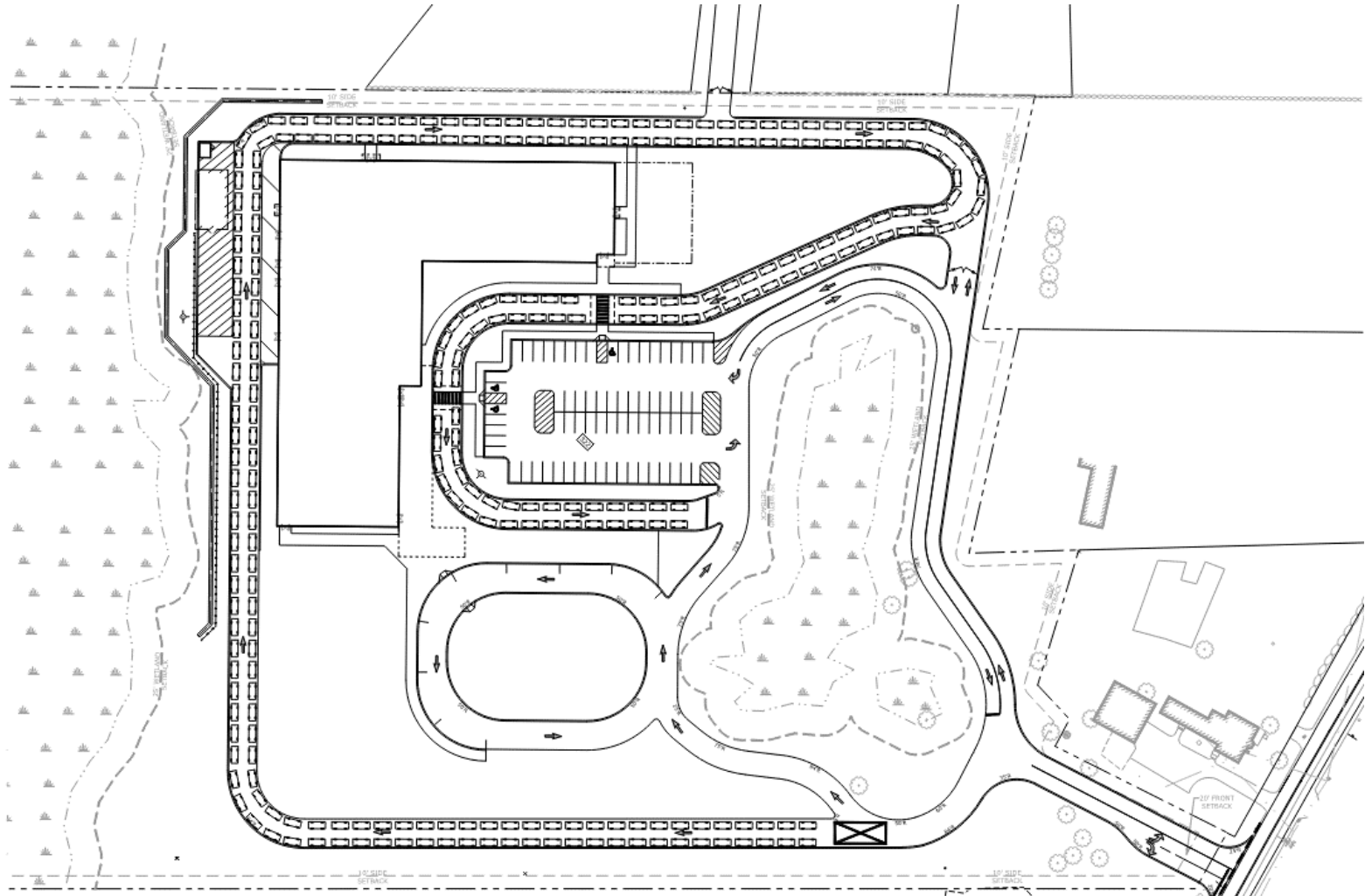


Site Layout

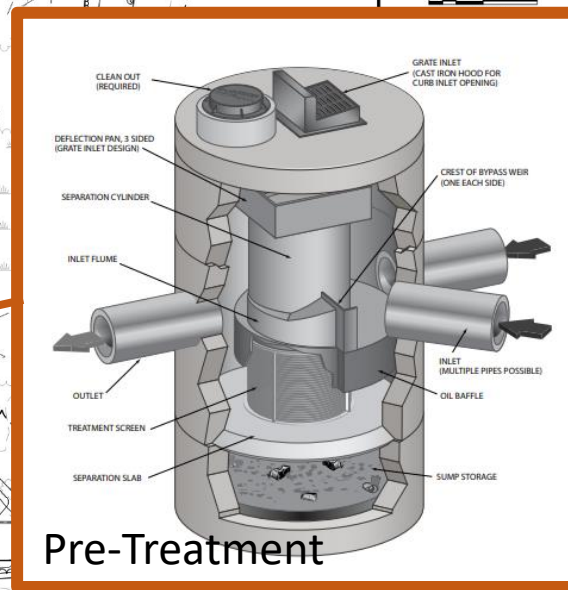
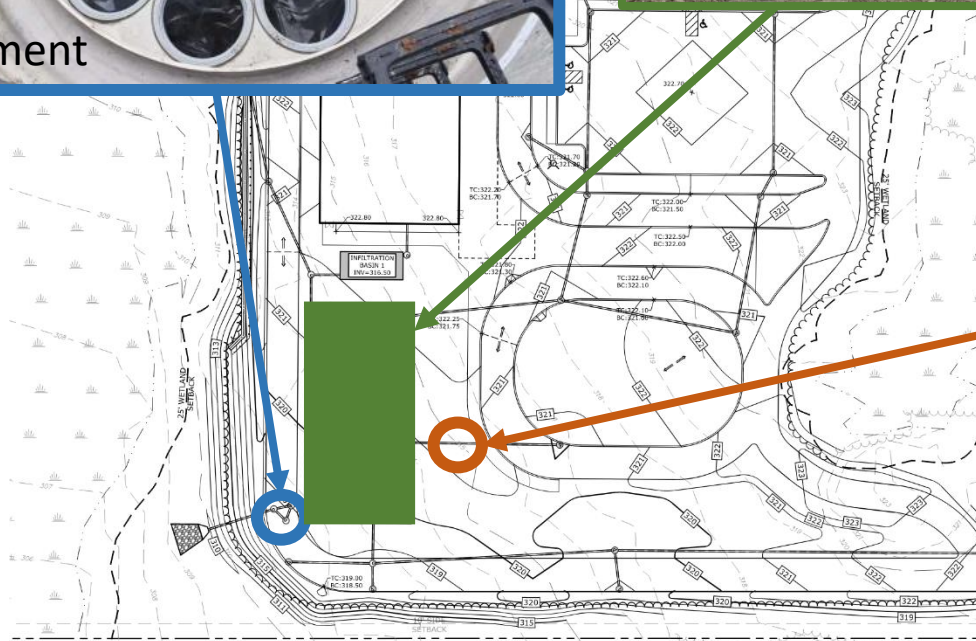


Site Layout

275 queue







[illegible]

Next Steps – Site Design

- Submit NHDES Alteration of Terrain – 10/13/23
- Utility coordination
- Traffic study
- Develop Sewer Discharge Permit
- Present plans locally
- Begin construction document development



Owners Representative Report

Mr. Gordon E. Bristol



Owners Representative Report- Next Steps

Guaranteed Maximum Price

Take the total of the project dollar amount.

Come up with the listing and estimate on all owner responsible purchases

The remaining balance is the amount left for construction (GMP)



Thank you!!
Questions?

Documents | Rochester School
Department
(rochesterschools.com)

Next meetings:

JBC November 8th

